

## **FRU (Field Replaceable Unit) list**

---

This chapter gives you the FRU (Field Replaceable Unit) listing in global configurations of AL1751W. Refer to this chapter whenever ordering for parts to repair or for RMA (Return Merchandise Authorization).









NOTE : Please note WHEN ORDERING FRU PARTS, that you should check the most up-to-date information available on your regional web or channel(<http://aicsl.acer.com.tw/spl/>). For whatever reasons a part number change is made, it will not be noted in the printed Service Guide. For ACER-AUTHORIZED SERVICE PROVIDERS, your Acer office may have a DIFFERENT part number code to those given in the FRU list of this printed Service Guide. You MUST use the local FRU list provided by your regional Acer office to order FRU parts repair and service of customer machines.







NOTE: To scrap or to return the defective parts, you should follow the local government ordinance or regulations on how best to dispose it, or follow the rules set by your regional Acer office on how to return it.



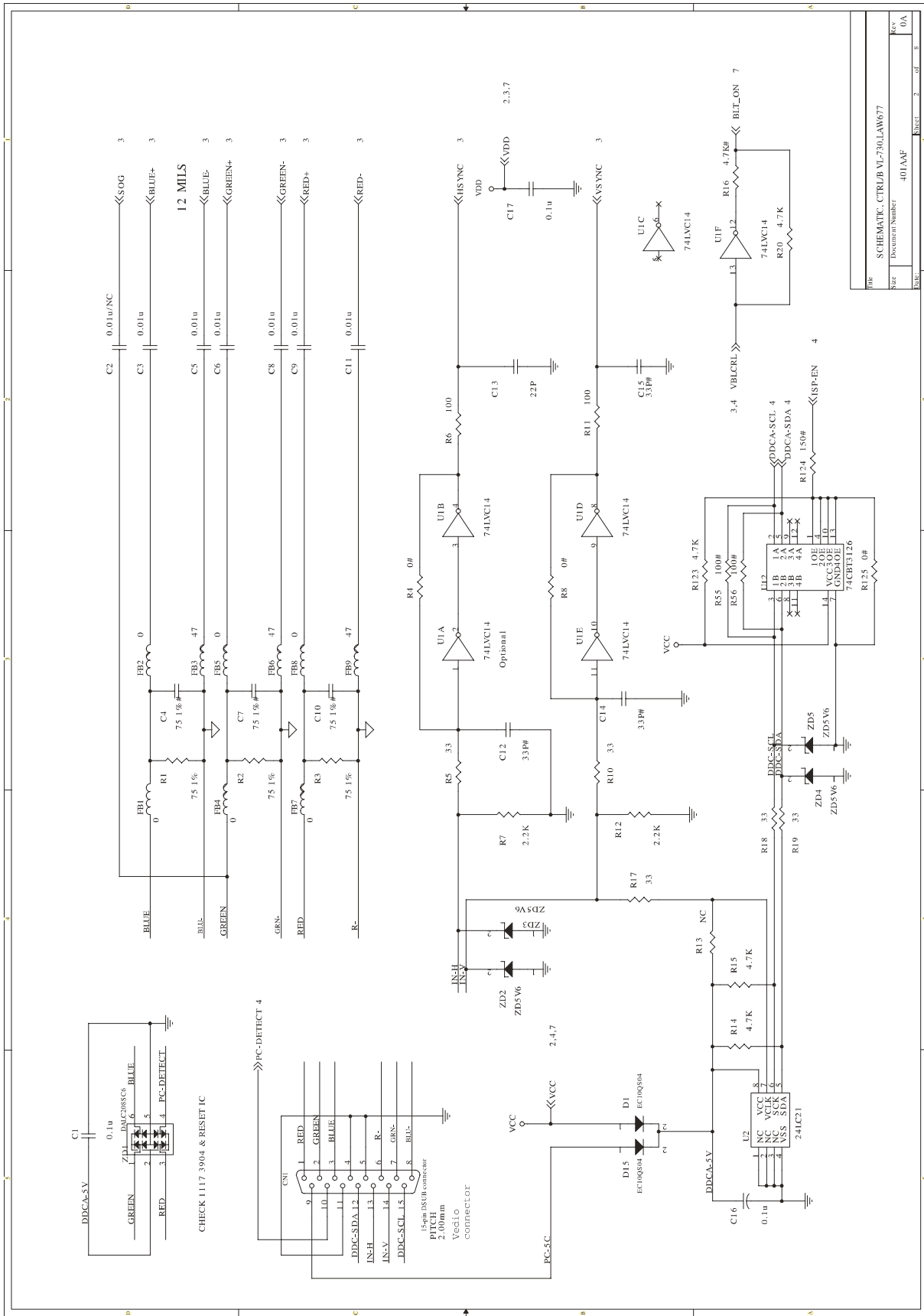
## Part list

No.	Photo	Part Name	Description	Part No.
1		Back Cover Screws	ITT 700598-016	MAA20074506
2		Stand Base Cover	LV1722 ABS94HB MBK24	FALV1722600
3		Stand Screws	M4X0.7+11P-MC WASHER DIM 8.0	MAA70002400
4		Stand Base	LV1725(SECC2.0) (T=20KG-CM)	ECLV1725000
			LV1713 ABS94HB MBK24_PN_MSV34	FALV1713700
			LV1721 ABS94HB MBK24	FALV1721600
5		Handy Hook Screws	M4X0.7+10P-ZK	MAA20105420
6		Handy Hook	LV1724 ABS94HB MBK24_PN_MSV34	FALV1724800
7		Function Board	VK-730 LAW677F	454AAF30001
8		Function Board Screws	TPP2X3+12B-MC	MAB80007400
9		Back Cover	LV1712E ABS94HB MBK24	FALV1712E00
10		Speaker Screws	TPB-4+8C-MC	MAB7T002401
11		EMI Shield Screws	TPP-4.0+10P-ZK	MAB20074202

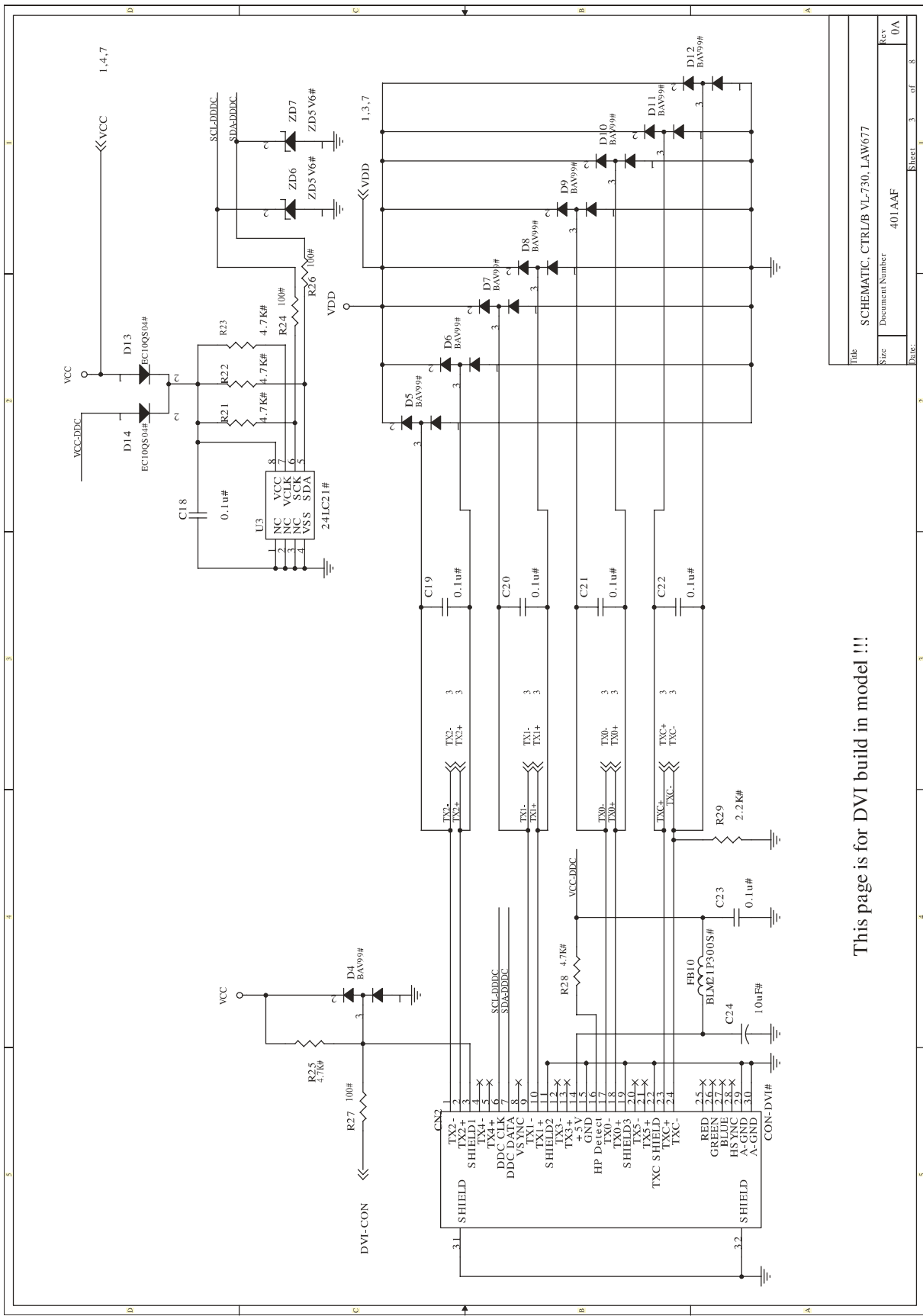
12		D-Sub Screws	4#40UNCX12.7 PLS-WASHER	MAAA0019400
13		Speaker (R)	2.5W 4.5ohm EABT301AR6 350mm R	CG12P51V000
14		Speaker (L)	2.5W 4.5ohm EABT301AL6 520mm L	CG12P51V010
15		LCD Board	VR-730 LAW677F	454AAE30001
16		LCD Board Screws	TPP2X3+12B-MC	MAB80007400
17		Invertor Board	LV17 17" TBD092L TDK	PK07V000700
18		Invertor to Mainboard cable	AW677 MB-INV 13P P2.0	DC020158200
19		Function board to Mainboard cable	AW677 CTRL-KEY 6P	DC020158700
20		Main Shield	LV1715(TIN0.3)	ECLV1715000
21		Mainboard and Invertor Board Screws	TPP-4.0+10P-ZK	MAB20074202

22		Mainboard	VL-730 LAW677F ABO	461AAF30001
23		Frame	LV1711A MCG28_PN_MSV34/MSV3 5	FALV1711AD0
24		Main Frame	LV17143(SECC0.8)(ADD BOSS)	ECLV1714300
25		Invertor to LCD Cable	LV17 LAMP-INV 4P	DC020152100
26		Mainboard to LCD Cable	AW677 CTRL-PANEL 20P	DC020158900
27		LCD Panel(F)	FLC43XWC8V-02 17" FUJITSU	AC6VF170000

## Schematic Diagram

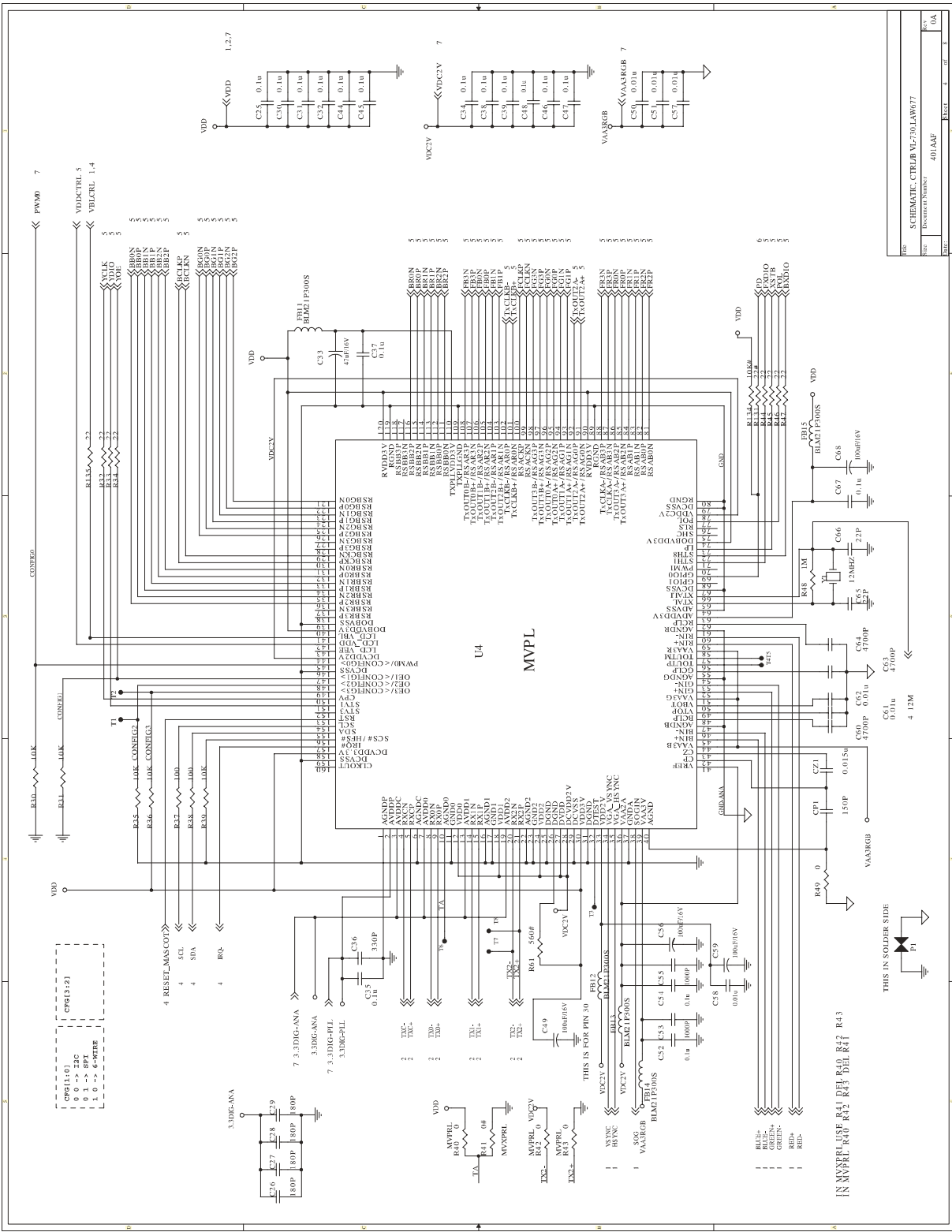


File	SCHEMATIC_CTRL/BJ-VL790LAW677
Size	Document Number 401AAP
Rev	0/A
Sheet	3 of 3



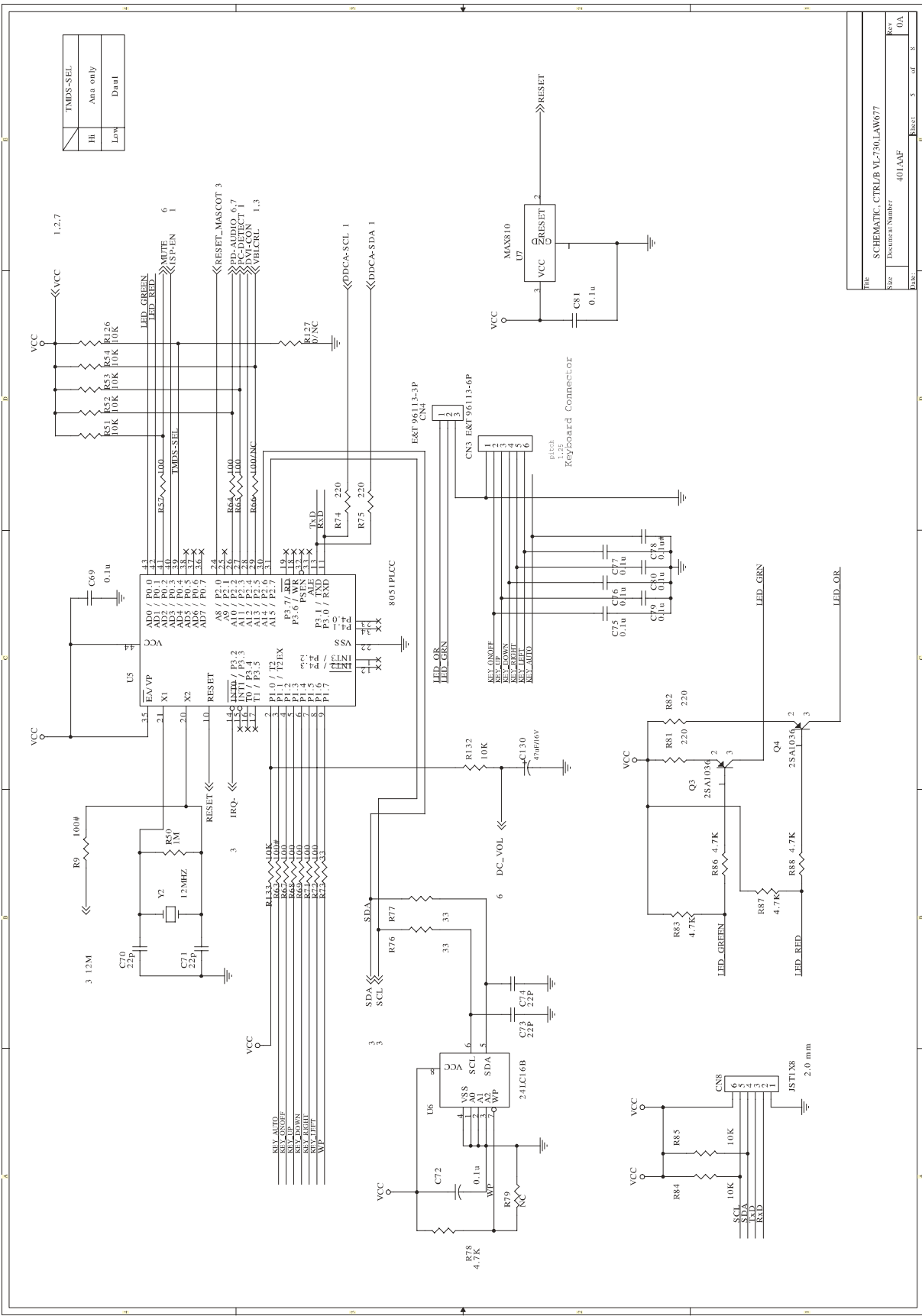
This page is for DVI build in model !!!

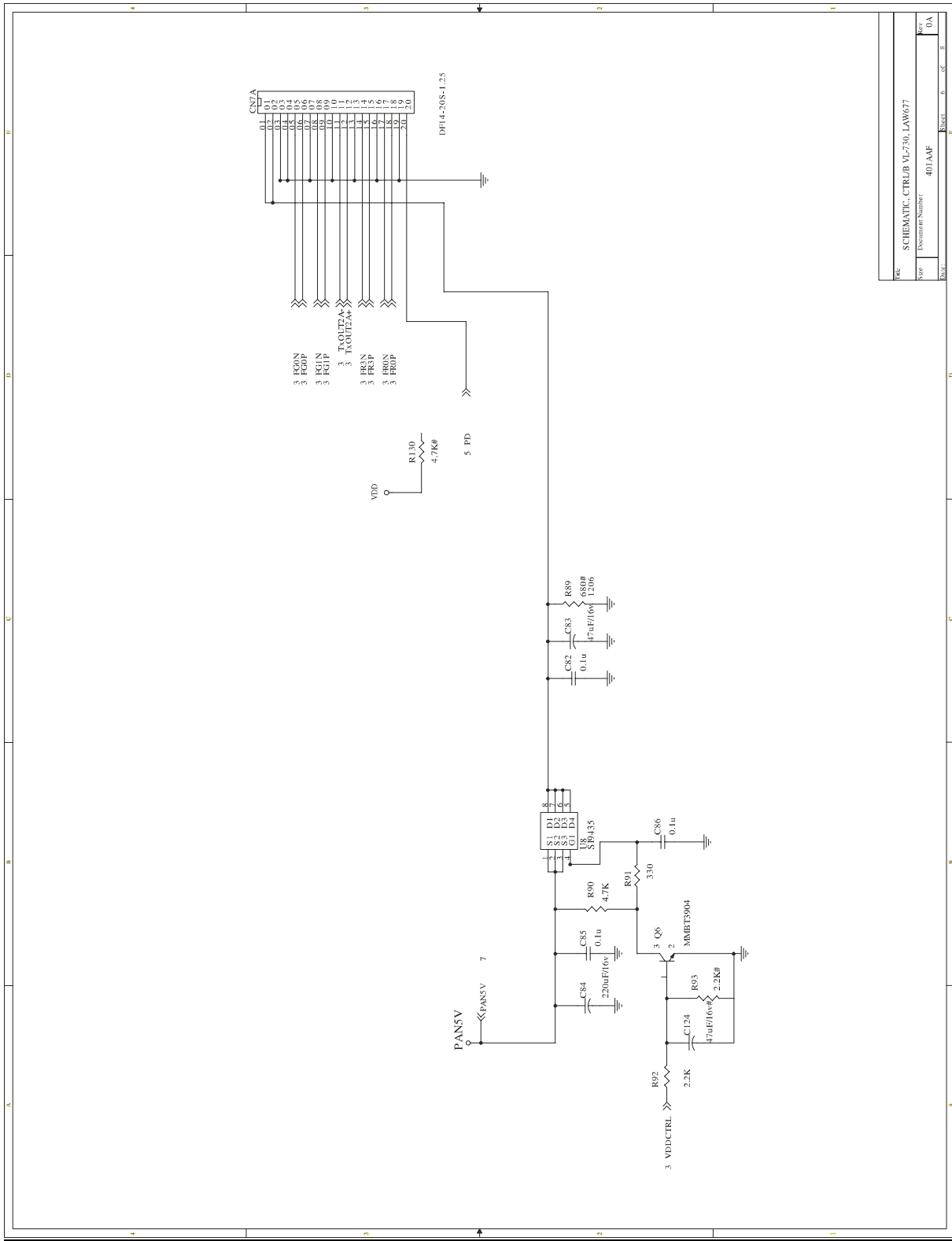
Title		SCHEMATIC, CTRL/B VL-730, LAW/677	
Size	Document Number	401AAF	Rev
			0A
Sheet		3	of 8



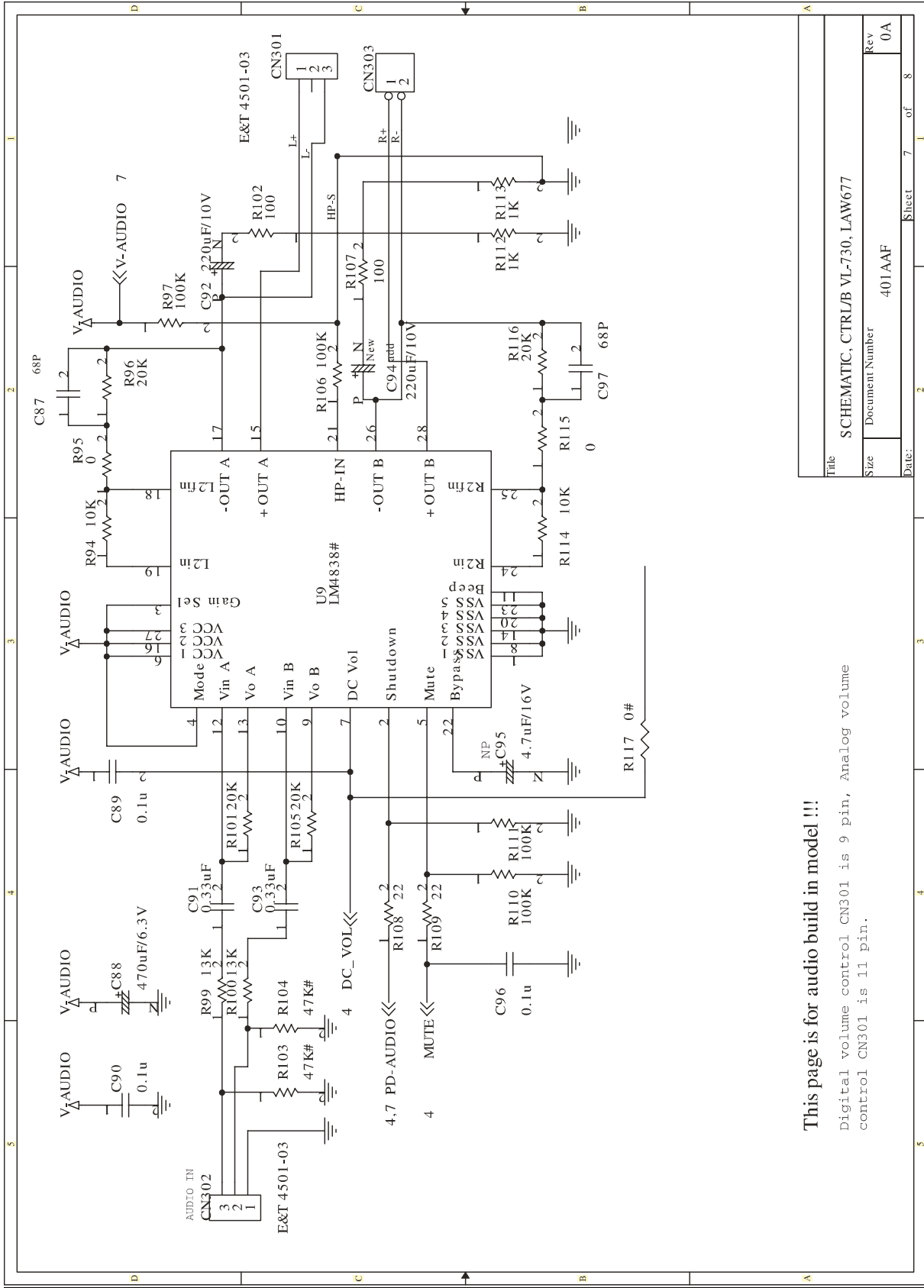
REV	1	DATE	01/01/01
SCH	SCHEMATIC: CTRL_BOARD_V1710LAW077	DESIGNER	UA
DOC	Document Number: 401AA	REVISION	1







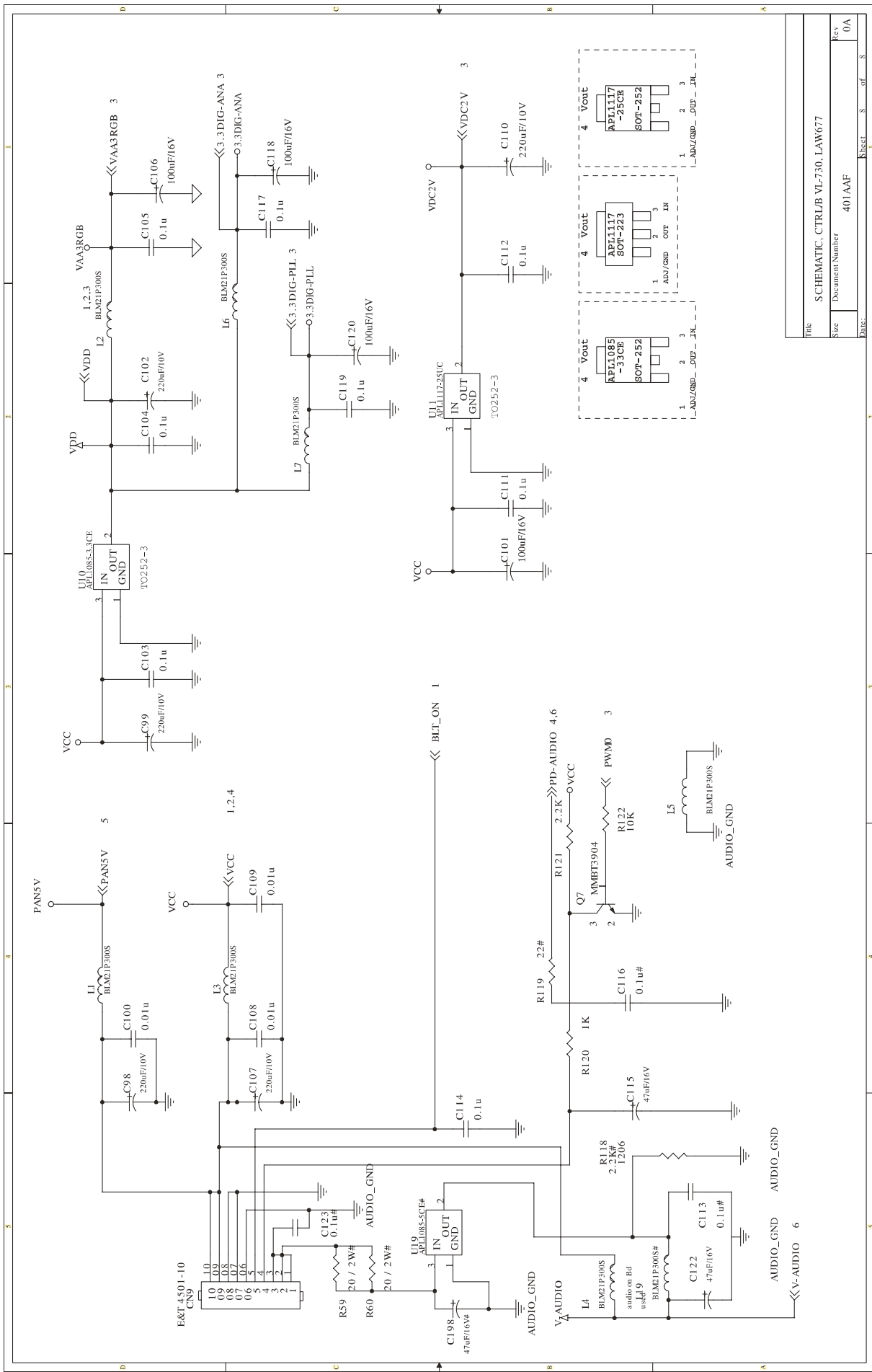
File	SCHEMATIC_CTRLUB_V1-730_LAW677
Size	Document Number: 401AAP
Sheet	6 of 8
Rev	0A



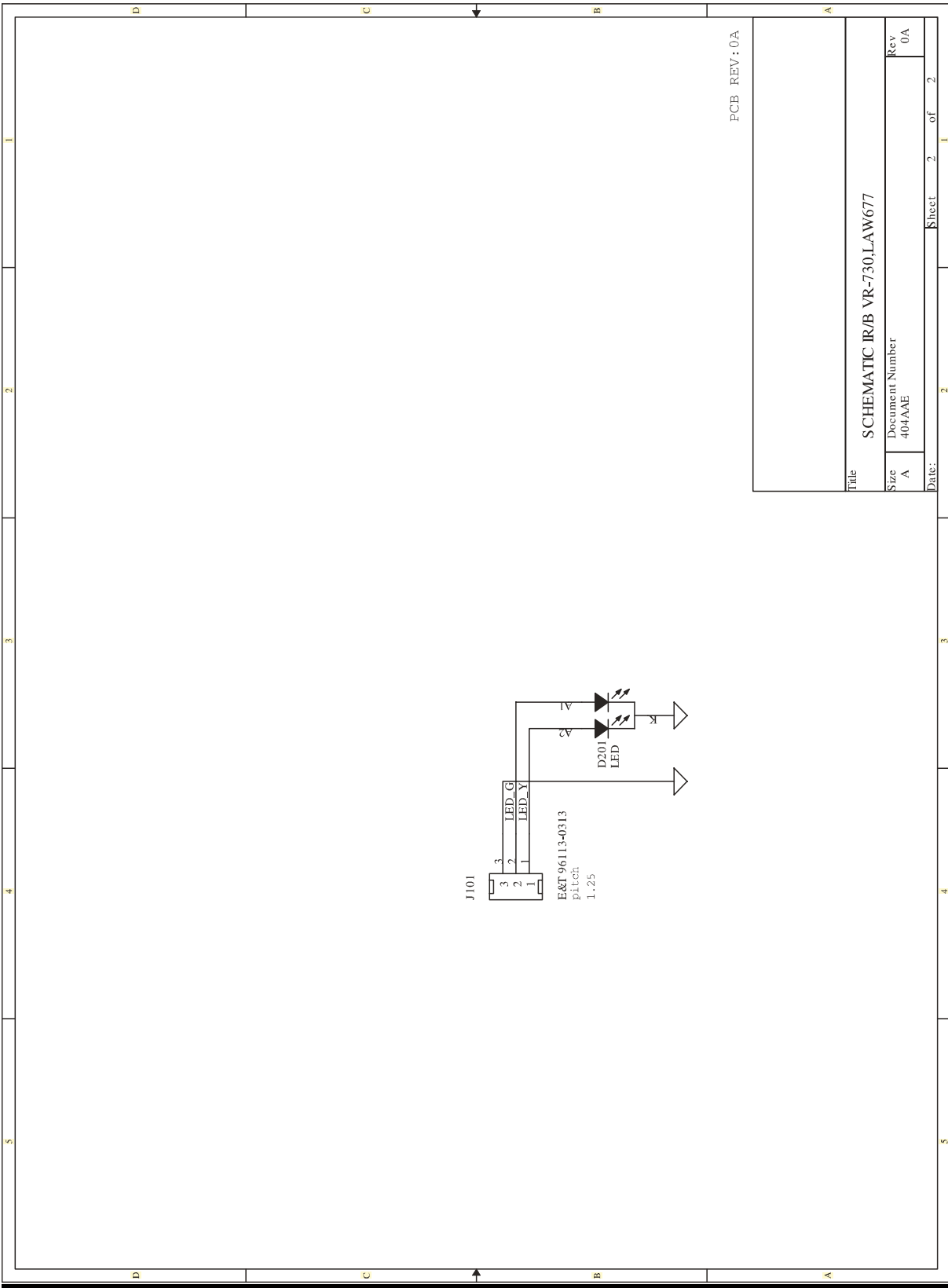
**This page is for audio build in model !!!**

Digital volume control CN301 is 9 pin, Analog volume control CN301 is 11 pin.

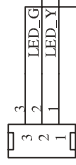
Title	SCHEMATIC, CTRL/B VL-730, LAW677	
Size	Document Number	401AAF
Rev		0A
Date:	Sheet	7 of 8



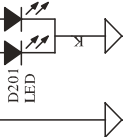
File	SCHEMATIC, CTRL/B VL-730, LAW677		
Size	Document Number	401AAF	Sheet 8 of 8
Date			Rev 0A



J101

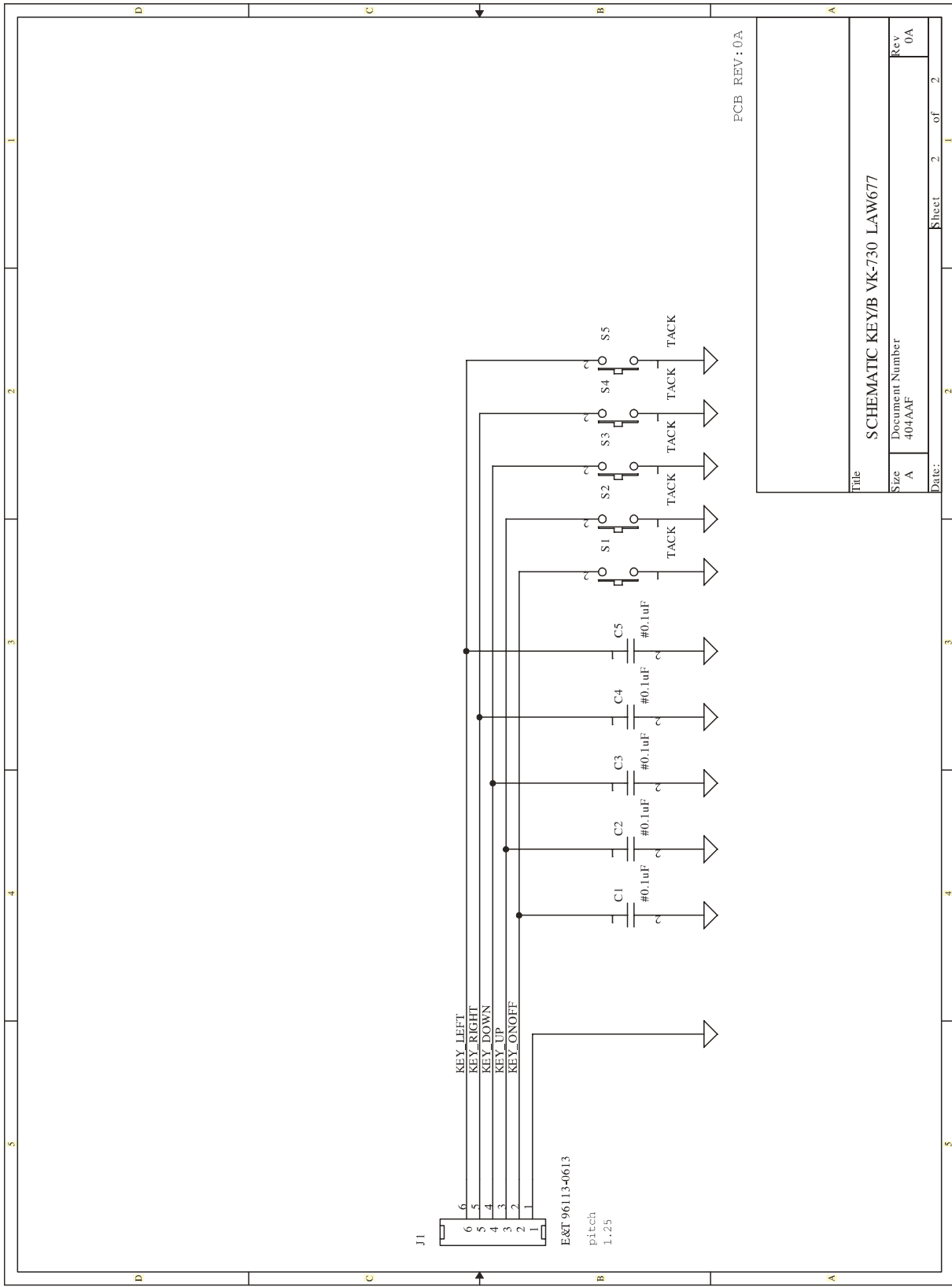


E&T 96113-0313  
pitch  
1.25



PCB REV: 0A

Title		SCHEMATIC IR/B VR-730, LAW677	
Size	A	Document Number	404AAE
Date:		Sheet	2 of 2
Rev		0A	



Title		SCHEMATIC KEY/B VK-730 LAW677	
Size	A	Document Number	404AAF
Rev	0A	Date:	Sheet 2 of 2