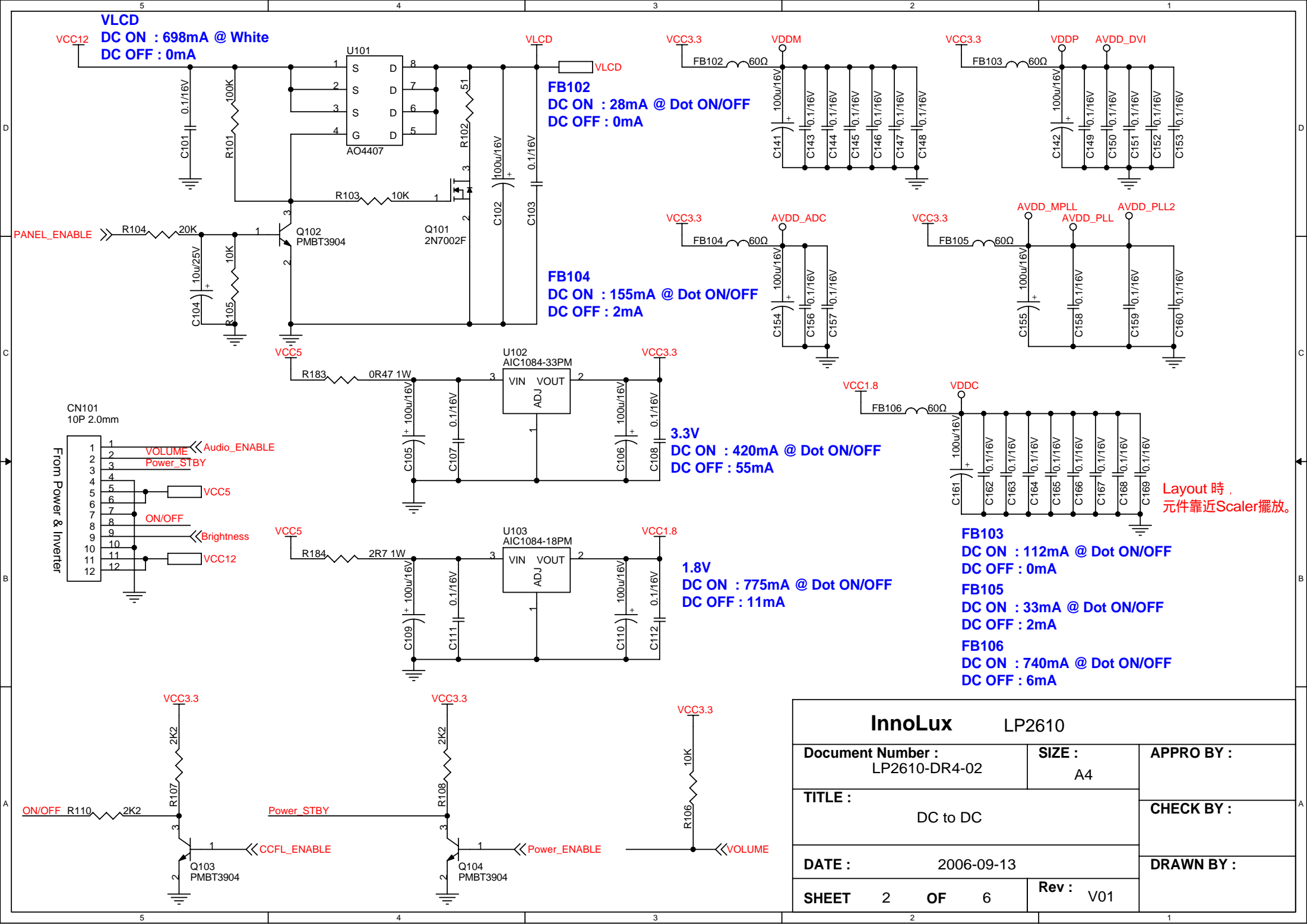


## ATTACHMENT 1 - RECOMMENDED PART LIST

Item	Catalogue	INL P/N	Description	Min Order Q'ty	
1	PCBA	790821300A01R	PCBA,I/F BOARD,(EMEA)LP2610-A12 ROHS	50	
2		790821400A00R	PCBA,P/I BOARD,LP2610-A12 ROHS	50	
3		790821500000R	PCBA,KEYPAD BOARD,LP2610 ROHS	50	
4	CABLE	453070800210R	PWR CORD 16A/250V BLK 6FT VDE,H05VV-F 3G	50	
5		453030300120R	CABLE,AUDIO 1P 6FT BLACK/GREEN CP03B06P0	50	
6		453010100150R	CABLE,D-SUB 15P MALE 6FT BLACK,SZ4120955	50	
7		430300800820R	HRN ASS'Y 8pin 340mm UL1571#28	50	
8		430303000710R	HRN ASS'Y LVDS 30P 270m; UL1007#30	50	
9		430300100220R	HRN ASS'Y 1P 250mm BLACK,UL1007#20,	50	
10		CASE/COVER/BRACKET ASSEMBLY	502090304900R	CHASSIS, LP2610	50
11			714071005800R	ASSY,STAND(B), LP2610 RoHS	50
12			714033008500R	ASSY,FRONT BEZEL(G), LP2610 RoHS	50
13	714021008200R		ASSY,BASE(B),LP2610	50	
14	501021211200R		COVER,HINGE(B), LP2610	50	
15	501021211100R		COVER,BACK(B), LP2610	50	
16	PANEL	631102260010RA	LCD PANEL 26" LM260WU1-SLB1(A)(LPL)RoHS	10	
17	SPEAKER	618100200170R	SPEAKER 2.5W 4Ω 230mm R/B/G W/CASE X08	50	



**VLCD**  
**DC ON : 698mA @ White**  
**DC OFF : 0mA**

**FB102**  
**DC ON : 28mA @ Dot ON/OFF**  
**DC OFF : 0mA**

**FB104**  
**DC ON : 155mA @ Dot ON/OFF**  
**DC OFF : 2mA**

**3.3V**  
**DC ON : 420mA @ Dot ON/OFF**  
**DC OFF : 55mA**

**1.8V**  
**DC ON : 775mA @ Dot ON/OFF**  
**DC OFF : 11mA**

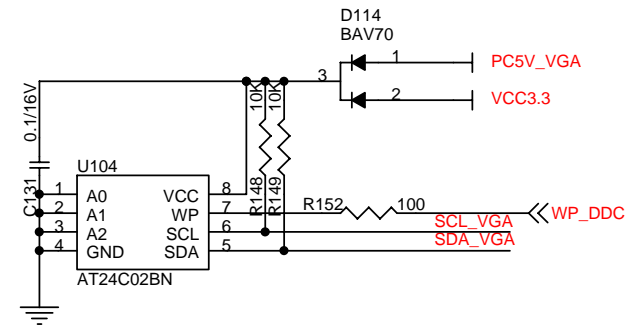
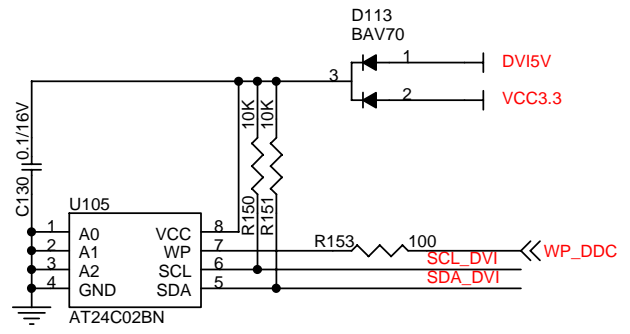
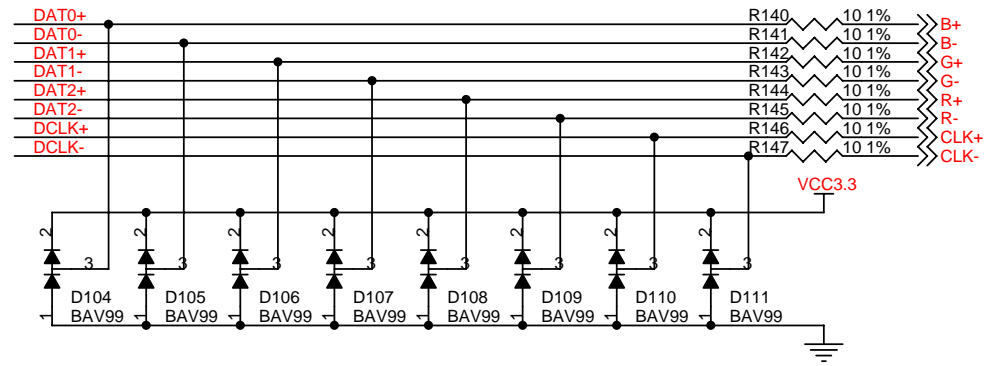
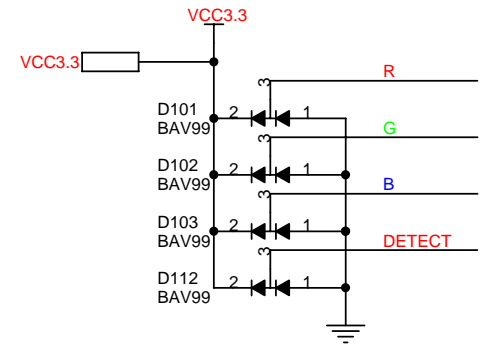
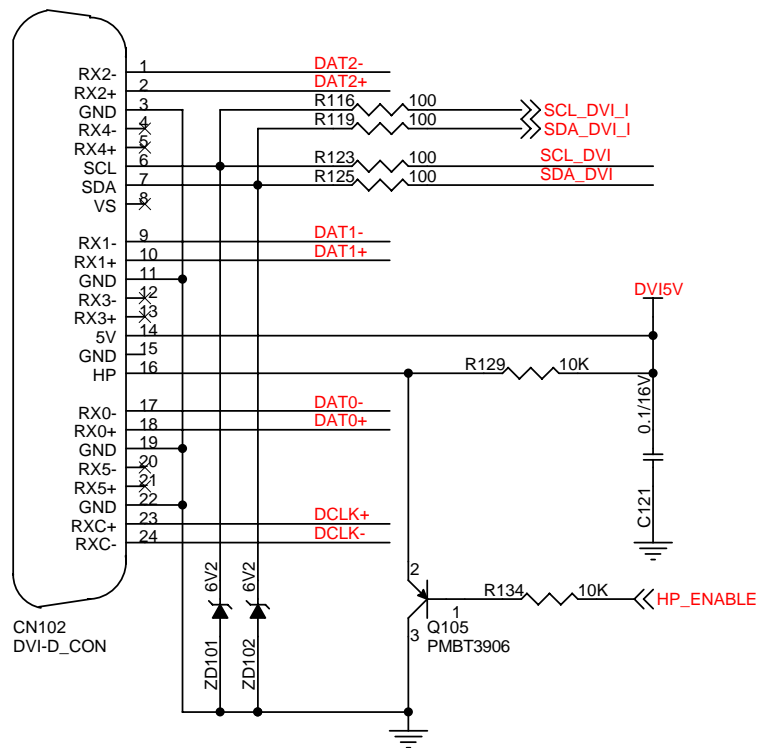
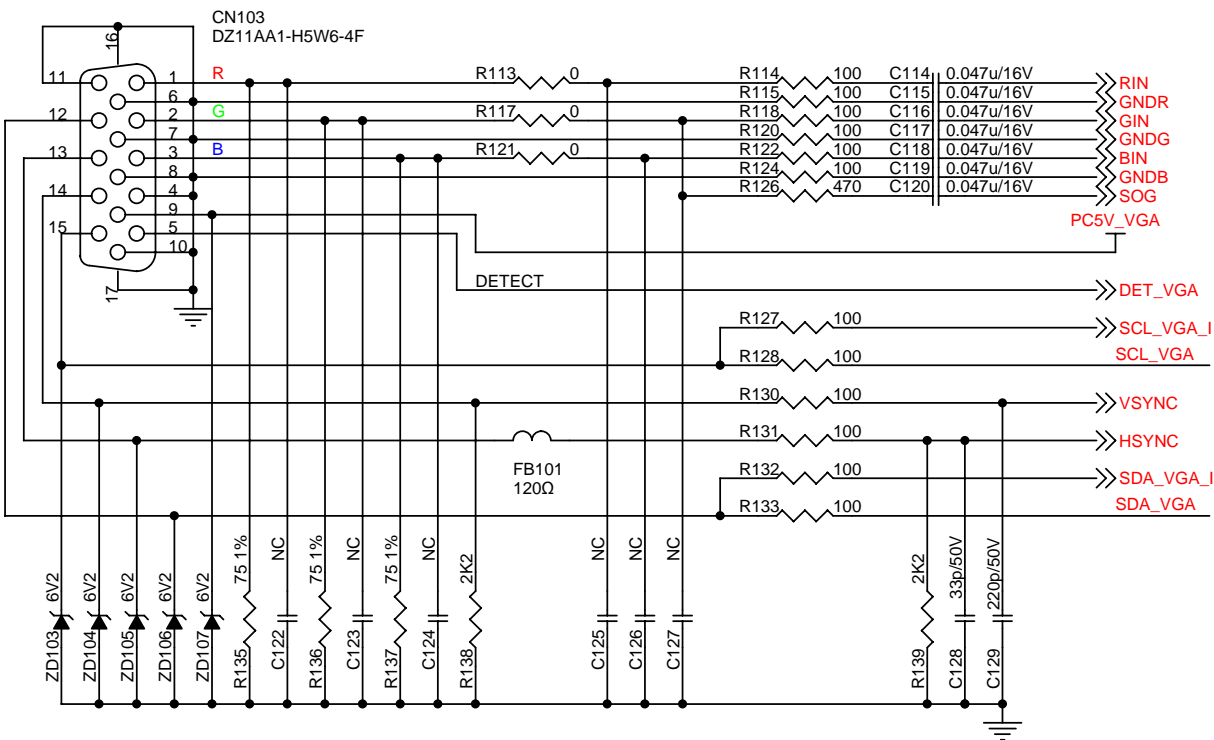
**FB103**  
**DC ON : 112mA @ Dot ON/OFF**  
**DC OFF : 0mA**

**FB105**  
**DC ON : 33mA @ Dot ON/OFF**  
**DC OFF : 2mA**

**FB106**  
**DC ON : 740mA @ Dot ON/OFF**  
**DC OFF : 6mA**

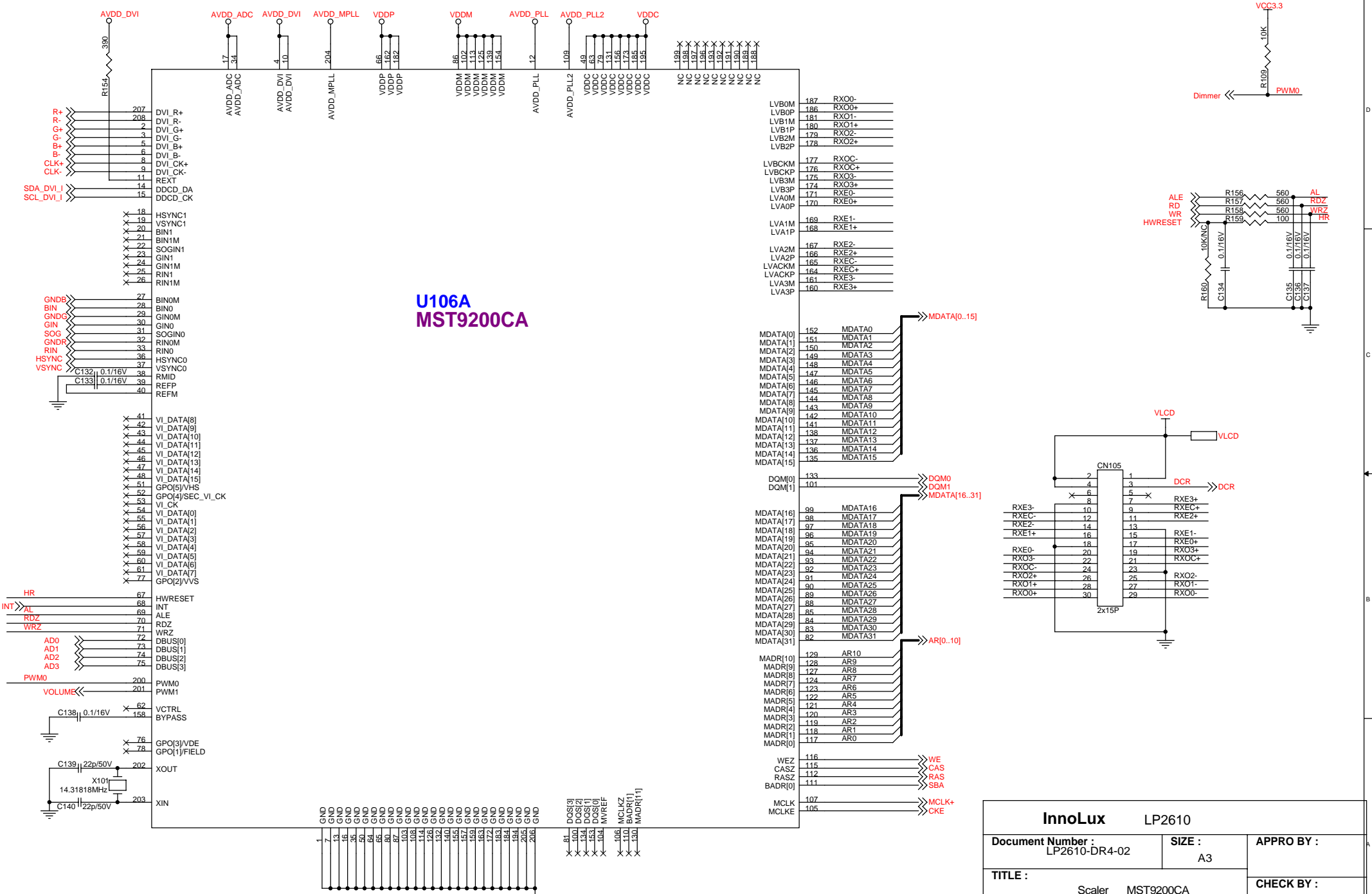
Layout時,  
 元件靠近Scaler擺放。

<b>InnoLux</b>		LP2610	
Document Number : LP2610-DR4-02		SIZE : A4	APPRO BY :
TITLE : DC to DC			CHECK BY :
DATE : 2006-09-13		DRAWN BY :	
SHEET	2	OF	6
		Rev :	V01

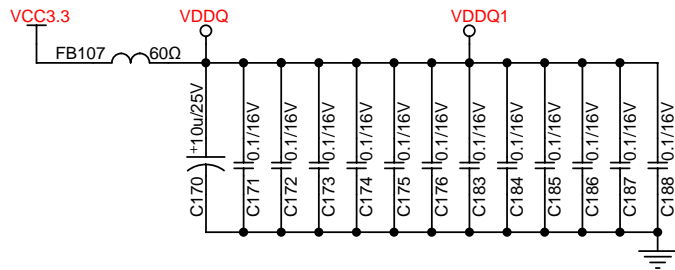
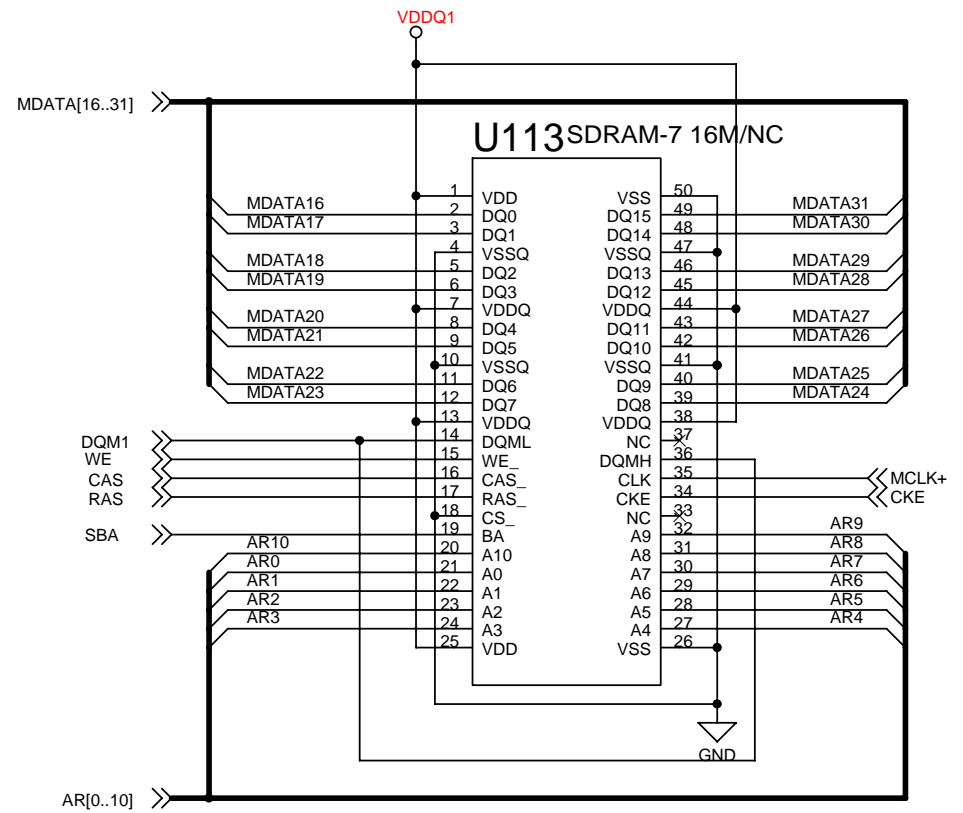
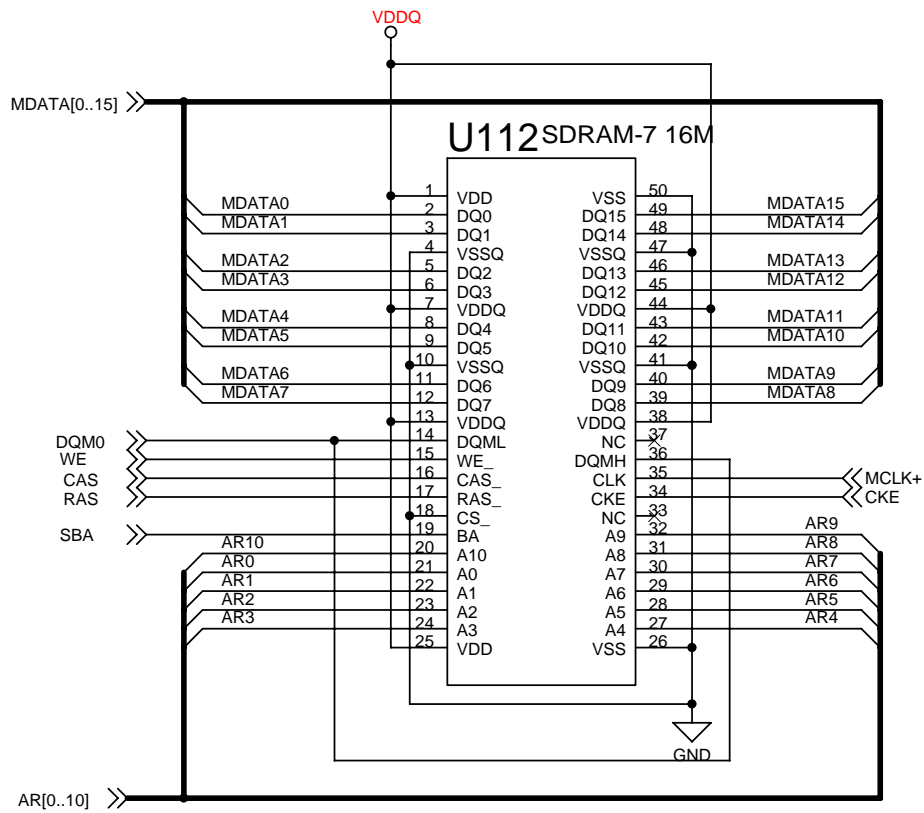


<b>InnoLux</b>		<b>LP2610</b>	
<b>Document Number :</b> LP2610-DR4-02		<b>SIZE :</b> A4	<b>APPRO BY :</b>
<b>TITLE :</b> Input		<b>CHECK BY :</b>	
<b>DATE :</b> 2006-09-13		<b>DRAWN BY :</b>	
<b>SHEET</b> 3	<b>OF</b> 6	<b>Rev :</b> V01	

# U106A MST9200CA

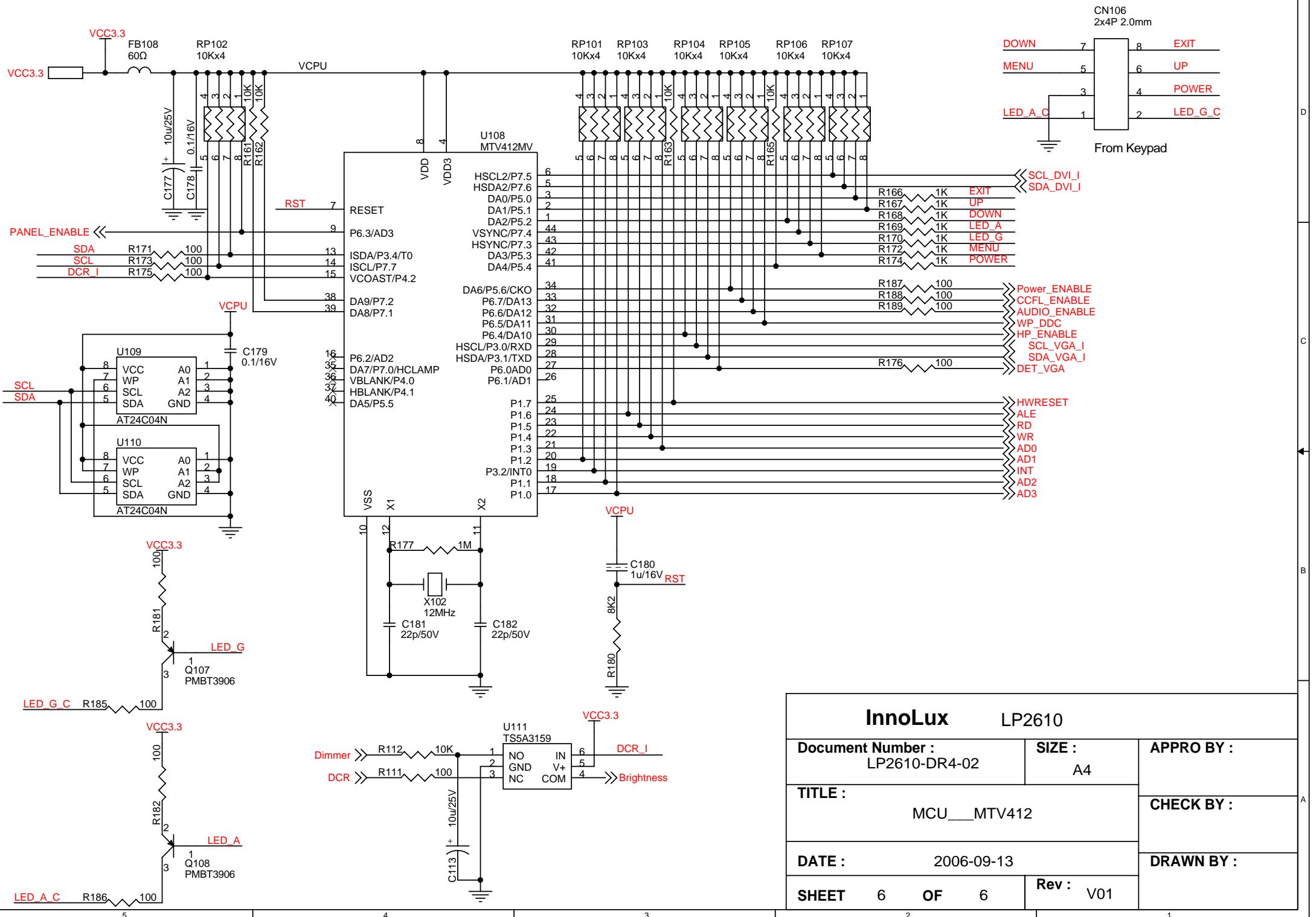


InnoLux LP2610		
Document Number : LP2610-DR4-02	SIZE : A3	APPRO BY :
TITLE : Scaler__MST9200CA		CHECK BY :
DATE : 2006-09-13		DRAWN BY :
SHEET 4 OF 6	Rev : V01	

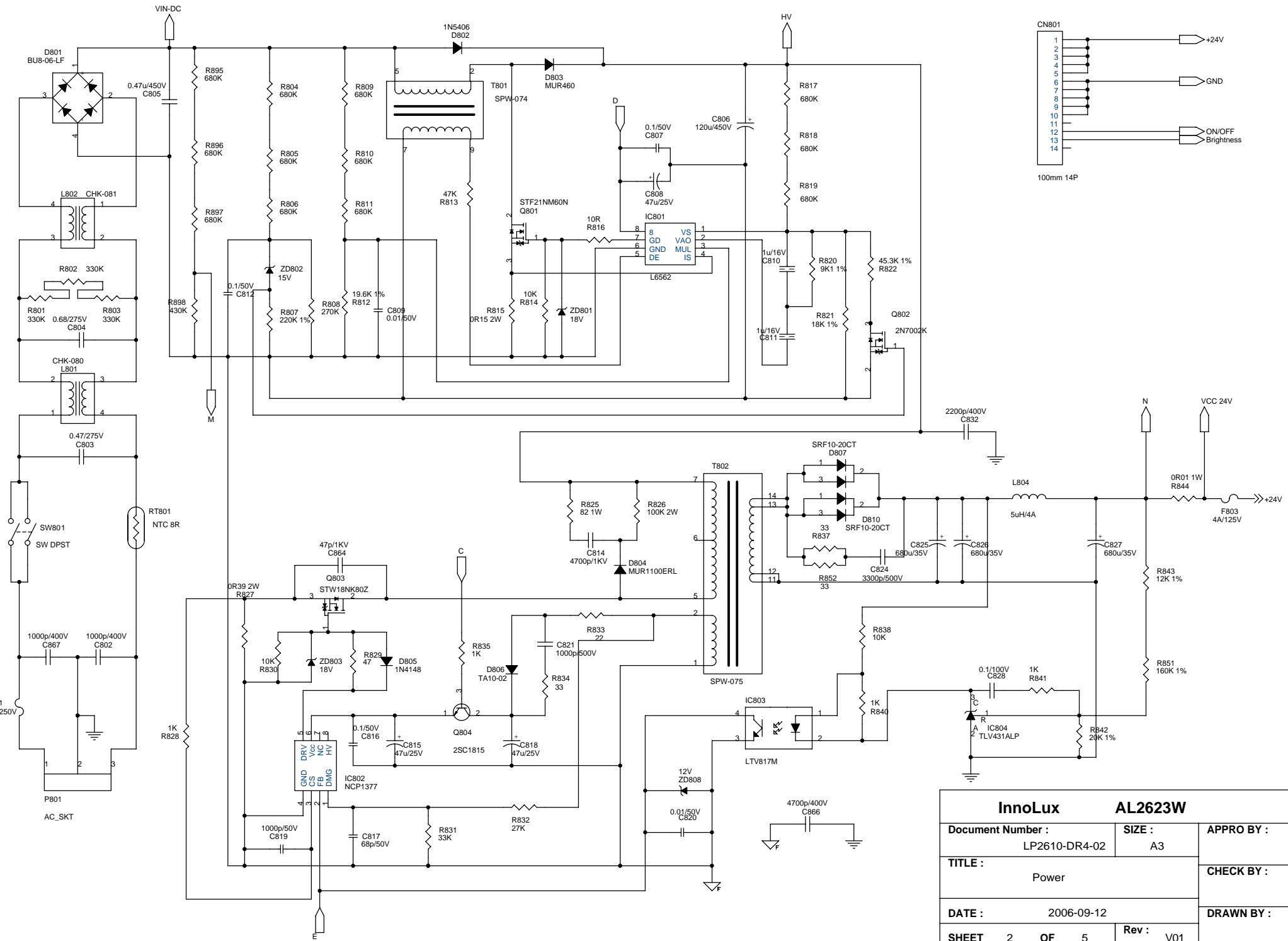


**FB107**  
**DC ON : 68mA @ Dot ON/OFF**  
**DC OFF : 0mA**

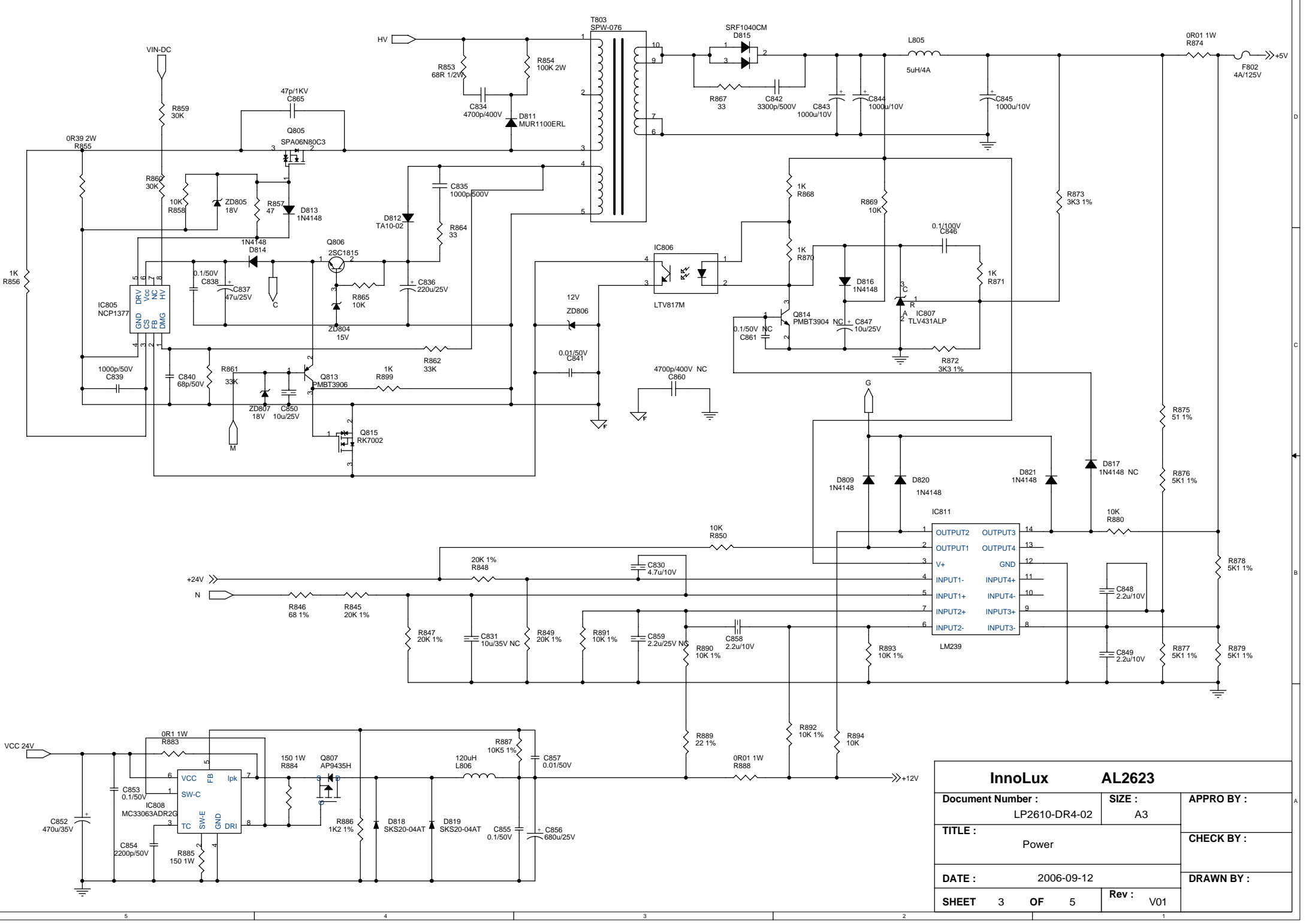
<b>InnoLux</b>		LP2610	
<b>Document Number :</b> LP2610-DR4-02		<b>SIZE :</b> A4	<b>APPRO BY :</b>
<b>TITLE :</b> SDRAM			<b>CHECK BY :</b>
<b>DATE :</b> 2006-09-13			<b>DRAWN BY :</b>
<b>SHEET</b> 5	<b>OF</b> 6	<b>Rev :</b> V01	



<b>InnoLux</b>		LP2610	
Document Number : LP2610-DR4-02		SIZE : A4	APPRO BY :
TITLE : MCU__MTV412			CHECK BY :
DATE : 2006-09-13		DRAWN BY :	
SHEET	6	OF	6
		Rev :	V01

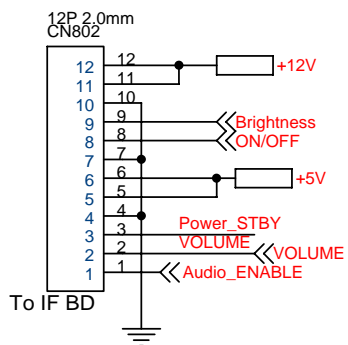
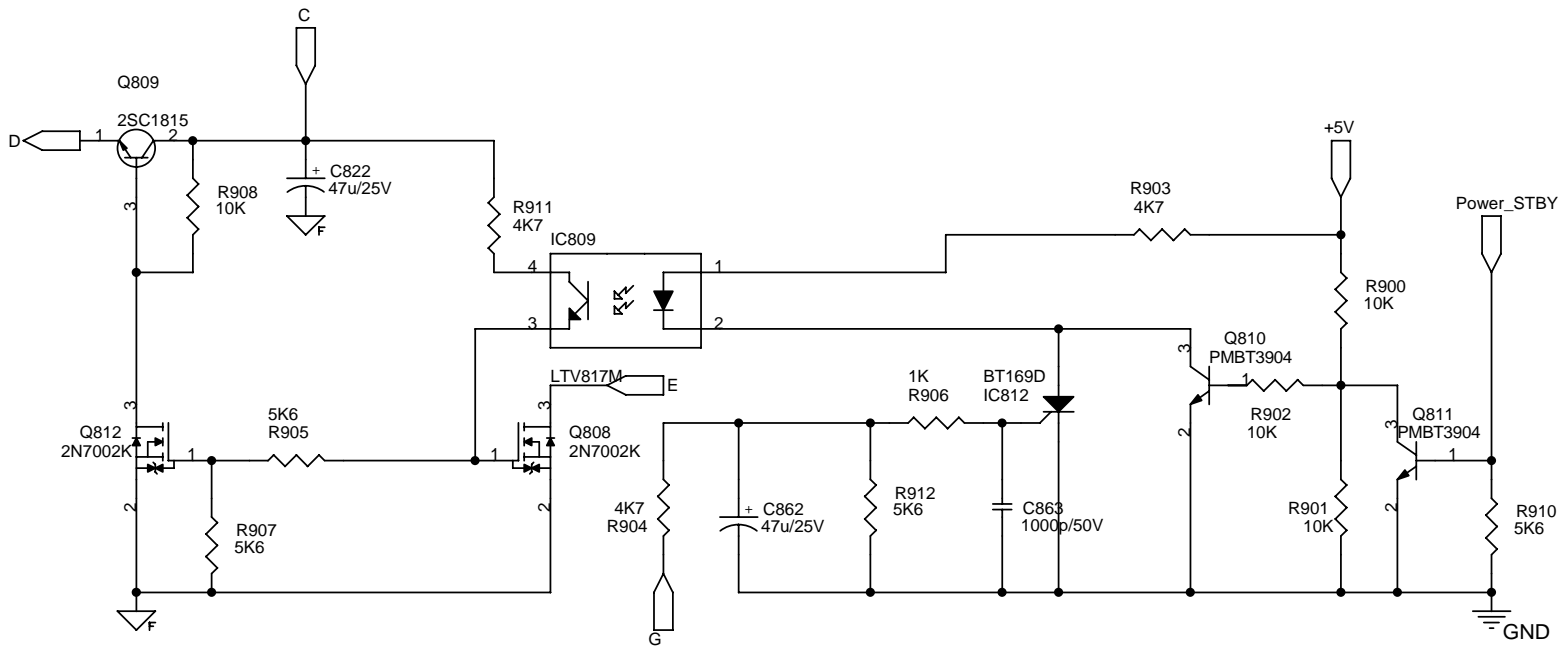


InnoLux AL2623W		
Document Number : LP2610-DR4-02	SIZE : A3	APPRO BY :
TITLE : Power		CHECK BY :
DATE : 2006-09-12		DRAWN BY :
SHEET 2 OF 5	Rev : V01	

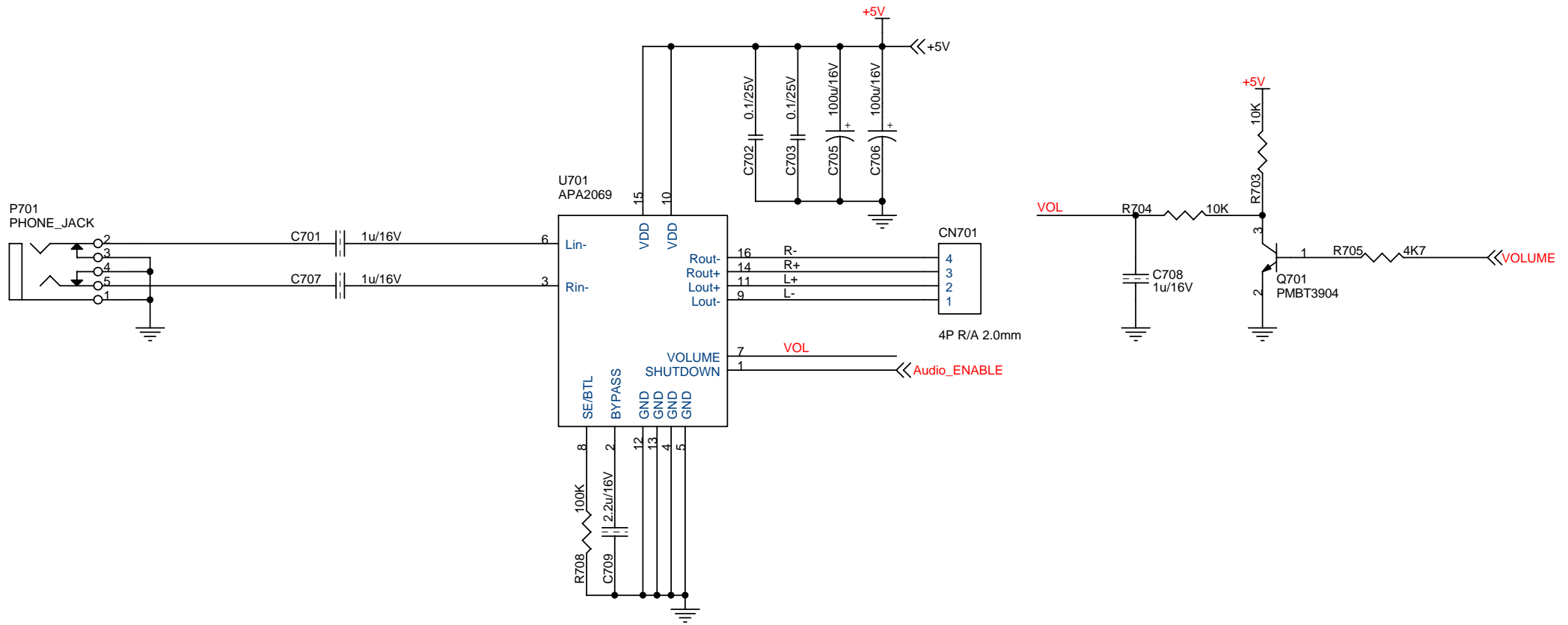


InnoLux AL2623		
Document Number : LP2610-DR4-02	SIZE : A3	APPRO BY :
TITLE : Power		CHECK BY :
DATE : 2006-09-12	DRAWN BY :	
SHEET 3 OF 5	Rev : V01	





InnoLux		AL2623W	
Document Number :	LP2610-DR4-02	SIZE :	A4
TITLE :	Standby power		CHECK BY :
DATE :	2006-09-12		DRAWN BY :
SHEET	4	OF	5
		Rev :	V01



<b>InnoLux</b>		<b>LE26XX (AL2623W)</b>	
<b>Document Number :</b> LP2610-DR4-02	<b>SIZE :</b> A4	<b>APPRO BY :</b>	
<b>TITLE :</b> Acer AL2623W		<b>CHECK BY :</b>	
<b>DATE :</b> 2006-09-12	<b>DRAWN BY :</b>		
<b>SHEET</b> 5 <b>OF</b> 5	<b>Rev :</b> V01		